



# DRINKING TECHNOLOGY 2020

- ANIMAL CLIPPERS
- ELECTRIC FENCING
- FARMING IMPLEMENTS



# DRINKING TECHNOLOGY 2020

**Dear customer,**

This catalogue contains all Lister quality farming implements for horses, cattle and sheep.

Our product range was born from experience, the progress of technology and its requirements.

Lister GmbH, Germany was established in 1954 and since more than 60 years Lister GmbH, Germany has grown to one of the leading manufacturers of **animal clippers, drinking bowls/ drinking systems, electric fencing and farm and stable accessories.**

**Lister Germany products are always a good choice!**

Take a look at the new catalogue. Our products will convince you. As a manufacturer based in Germany, we pay attention to quality. Our staff is at your service with help and advice.

Furthermore our business-units of **dairy and industrial cooling** have expanded.

Further details can be found on our website  
[www.lister-kuehlung.com](http://www.lister-kuehlung.com)



**IHRE LISTER GMBH  
- always the right decision! -**

Visit us on the internet:

[www.lister.de](http://www.lister.de)



# Table of contents

<b>PASTURE PUMPS</b>	<b>4 - 5</b>
<b>EXTENSION DRINKING BOWLS FOR IBC TANKS</b>	<b>6 - 7</b>
<b>EXTENSION DRINKING BOWLS</b>	<b>8</b>
<b>DRINKING BOWLS, UNHEATED</b>	<b>9</b>
<b>DRINKING BOWLS WITH PRESSURE TONGUE</b>	<b>10 - 11</b>
<b>DRINKING BOWLS WITH PENDULAR VALVE</b>	<b>12 - 15</b>
<b>DRINKING BOWLS WITH FLOAT VALVE</b>	<b>16 - 19</b>
<b>BACTO® PROTECT DRINKING BOWLS WITH PRESSURE TONGUE</b>	<b>20 - 21</b>
<b>BACTO® PROTECT DRINKING BOWLS WITH PENDULAR VALVE</b>	<b>22 - 25</b>
<b>BACTO® PROTECT DRINKING BOWLS WITH FLOAT VALVE</b>	<b>26 - 27</b>
<b>BACTO® PROTECT DRINKING BOWLS FOR SMALL ANIMALS</b>	<b>28</b>
<b>DRINKING BOWLS FOR SMALL ANIMALS</b>	<b>29</b>
<b>CIRCULATIONS PUMPS</b>	<b>30 - 31</b>
<b>CIRCULATION PUMP ACCESSORIES</b>	<b>32</b>
<b>WATERING NIPPLES</b>	<b>33</b>
<b>STAINLESS STEEL DRINKING BOWLS</b>	<b>34</b>
<b>CAST IRON DRINKING BOWLS WITH INTEGRATED HEATING SYSTEM</b>	<b>35</b>
<b>CAST IRON DRINKING BOWLS</b>	<b>36 - 37</b>
<b>TROUGHS AND METAL CAST DRINKING BOWLS</b>	<b>38</b>
<b>AT VALVES / CONSTANT WATER LEVEL VALVES</b>	<b>39</b>
<b>HEATING CABLES 230 VOLT</b>	<b>40</b>
<b>HEATING CABLES 24 VOLT, THERMOSTAT, TRANSFORMER</b>	<b>41</b>
<b>ACCESSORIES</b>	<b>42 - 43</b>

## PASTURE PUMPS



### L 3

Pasture pump for horses and cows made of indestructible cast iron. Very hard wearing lever-mechanism (just 2 bearing locations). All cast iron parts have a weather proved priming coat and special varnish. Connection piece and valve are treated against corrosion. The function is ensured for a maximum suction distance/depth of approx. 6 m. Suitable for hose and pipe connection.

- **Height:** 450 mm
- **Length:** 600 mm
- **Connection outer thread:** 3/4"
- **Water flow volume:** approx. 0.6 l per single lever stroke
- **Weight:** approx. 32 kg



Article	Article no.	Quantities
L 3 pasture pump on shipping pallet	00-0030005	per pcs / 18 per palette
L3 pasture pump on shipping pallet, with hose connection	00-0030015	per pcs / 18 per palette

### L 4

Pasture pump for horses, foals and calves made of indestructible cast iron. The pump is 50 % easier to move as the almost identically constructed pasture pump L3. Very hard wearing lever-mechanism (just 2 bearing locations). All cast iron parts have a weather proved priming coat and special varnish. Connection piece and valve are treated against corrosion. The function is ensured for a maximum suction distance/depth of approx. 6 m. Suitable for hose and pipe connection.

- **Height:** 450 mm
- **Length:** 600 mm
- **Connection outer thread:** 3/4"
- **Water flow volume:** approx. 0.4 l per single lever stroke
- **Weight:** approx. 32 kg



Article	Article no.	Quantities
L 4 pasture pump on shipping pallet	00-0045005	per pcs / 18 per palette
L4 pasture pump on shipping pallet, with hose connection	00-0045015	per pcs / 18 per palette

### PLASTIC FOOT VALVE 1"

For all pasture pumps, solid retainer valve stops water back flow and keeps water in suction hose, grey.



Article	Article no.	Quantities
PLASTIC FOOT VALVE 1"	00-0040000	per pcs

### PLASTIC FOOT VALVE 1 1/4"

For all pasture pumps, solid retainer valve stops water back flow and keeps water in suction hose, black.



Article	Article no.	Quantities
PLASTIC FOOT VALVE 1 1/4"	00-0040100	per pcs

## PASTURE PUMPS



### ISO-TOP

The thermo insulated cover protects the Lister L 3 and L 4 pasture pumps against frost - to be installed on a concrete ring (diam. 800 mm - min.height 800 mm) which is available from shaft-and channel construction trade.

Supplied with mountage set for the pasture pumps L 3 and L 4.

See special pages on anti-freeze drinking devices.



Article	Article no.	Quantities
ISO-TOP	00-0046000	per pcs

### GAS BURNER

To bring the drinking basin of the LISTER pasture pumps to a moderate temperature in connection with the insulated thermo cover ISO TOP. Use with standard gas bottles - with a security valve.



Article	Article no.	Quantities
GAS BURNER	00-0044100	per pcs

### SPECIAL SUCTION HOSE

For all pasture pumps, food safe.

Outer diameter 1" (35 mm), inner diameter 3/4" (25 mm)



Article	Article no.	Quantities
SPECIAL SUCTION HOSE 25 M	00-0042000	per pcs
SPECIAL SUCTION HOSE 50 M	00-0042100	per pcs



## EXTENSION DRINKING BOWLS FOR IBC TANKS



### TW 30 WN

Universal trough drinker for horses, cattle etc. for connection to IBC tanks.  
Trough drinker made of plastic with solid galvanized steel frame and sturdy brass floater valve, valve cover made of stainless steel.  
For transport purposes the valve can be fixed.  
With two drain holes and screw tops for an easy cleaning.  
Supplied with hose connection, hose mantled with steel mesh.

- **Width:** 810 mm
- **Height:** 400 mm
- **Depth:** 365 mm
- **Width of adapter:** 50 mm
- **Weight:** approx. 11 kg
- **Capacity:** approx. 32 l
- **Connection to water tank:** IBC Tank S 60 inner thread



Article	Article no.	Quantities
TW 30 WN	00-0051750	per pcs
SPARE FLOATER VALVE	09-0050753	per pcs

### SB 112 WN

Plastic drinker with floater valve suitable for both process and well water.  
Livestock friendly drinker without pressure tongue, sturdy and anti-bite resistant.  
Encapsulated brass floater, protected against dirt.  
Complete with hose connection, steel mesh hose and galvanized mounting plate.

- **Width:** 240 mm
- **Depth:** 340 mm
- **Width of adapter:** 50 mm
- **Weight:** approx. 1,1 kg
- **Connection to water tank:** IBC Tank S 60 inner thread



Article	Article no.	Quantities
SB 112 WN	00-0051400	per pcs
SPARE FLOATER VALVE	09-0050753	per pcs

## EXTENSION DRINKING BOWLS FOR IBC TANKS



### UT 400 SD WN

Cast-iron drinking bowl with low-pressure valve and stainless steel pressure plate for water tanks, ideal for horses and cattle. Comes complete with hose connection, steel meshed hose and galvanized mounting plate.

- **Width:** 200 mm
- **Depth:** 270 mm
- **Width of adapter:** 50 mm
- **Weight:** approx. 3.5 kg
- **Connection to water cart:** IBC tank S 60 female thread



Article	Article no.	Quantities
UT 400 SD WN	00-0051100	per pcs
LOW PRESSURE SPARE VALVE	09-0096290	per pcs

### SB 1 WN

Plastic drinking bowl with valve for low-pressure on water carts, suitable for horses and cattle.

Comes complete with hose connection, hose mantled with steel mesh and galvanized mounting plate.

- **Width:** 220 mm
- **Depth:** 170 mm
- **Width of adapter:** 50 mm
- **Weight:** approx. 1.1 kg
- **Connection to water tank:** IBC tank S 60 female thread



Article	Article no.	Quantities
SB 1 WN	00-0051000	per pcs
LOW PRESSURE SPARE VALVE	09-0096290	per pcs

### SB 12 KU WN

Plastic drinking bowl with valve for low-pressure on water carts, suitable for horses and cattle.

Comes complete with hose connection, hose mantled with steel mesh and galvanized mounting plate.

- **Width:** 148 mm
- **Depth:** 180 mm
- **Width of adapter:** 50 mm
- **Connection to water tank:** IBC tank S 60 female thread



Article	Article no.	Quantities
SB 12 KU WN	00-0051200	per pcs
LOW PRESSURE SPARE VALVE	09-0112270	per pcs

## EXTENSION DRINKING BOWLS



### TW 1 N

Drinking bowl for all water carts. Cast aluminium alloy bowl with flange seal and sunken stainless steel pressure plate. Plastic valve, easy to exchange.

- **Width:** 240 mm
- **Depth:** 338 mm
- **Weight:** approx. 2.5 kg
- **Diameter flange:** 190 mm



Article	Article no.	Quantities
TW 1 N	00-0050600	per pcs
SPARE VALVE plastic for TW 1 N	09-0050551	per pcs
SPARE VALVE metal for TW 1 A and TW 1 N	09-0050506	per pcs

### TW 30 N

Universal trough drinker for water barrels.

Trough drinker, plastic with solid galvanized steel frame and sturdy brass floater valve, valve cover made of stainless steel.

For transport purposes the valve can be fixed.

With two drain holes and screw tops for an easy cleansing.

Supplied with flange gasket.

- **Width:** 810 mm
- **Height:** 400 mm
- **Depth:** 365 mm
- **Weight:** aprox. 10,8 kg
- **Content:** aprox. 32 l



Article	Article no.	Quantities
TW 30 N	00-0050750	per pcs
SPARE FLOATER VALVE	09-0050753	per pcs



## DRINKING BOWLS, UNHEATED



### SB 1

Plastic drinking bowl for horses and cattle.

Reinforcing ridge at the edge of the drinking basin. Dimensional stability can be guaranteed as well as anti-bite resistance. This drinking bowl is equipped with a suppressible pressure tongue and a plastic valve with high water performance. Water connections can either be made on the top or on the bottom side or directly to a horizontally installed water pipe.

Circulation suitable!

- **Width:** 220 mm
- **Depth:** 280 mm
- **Hole centre distance:** 100 mm
- **Connection:** R 1/2" inner thread from top or bottom
- **Water flow volume:** approx. 19.6 l/min. at 5 bar
- **Bowl volume:** approx. 1,0 l
- **Weight:** approx. 1 kg



Article	Article no.	Quantities
SB 1 green	01-1096000	per pcs
SB 1 N green (low pressure)	01-1096010	per pcs
SB 1 black	01-1096001	per pcs
SB 1 N black (low pressure)	01-1096007	per pcs
SPARE VALVE	09-0096260	per pcs
LOW PRESSURE SPARE VALVE	09-0096290	per pcs

### SB 20

Plastic drinking bowl for horses and cattle.

With 1/2" inner thread for connection from top or bottom.

An extra large drinking bowl made of a sturdy bite-resistant plastic.

Smooth moving brass pendular valve with water regulating screw.

Cleaning is simple due to a removable plastic plug fitted in the middle of the bowl.

Circulation suitable!

- **Width:** 257 mm
- **Depth:** 305 mm
- **Hole centre distance:** 136 x 100 mm
- **Connection:** R 1/2" inner thread from top or bottom
- **Water flow volume:** approx. 11 l/min. at 5 bar
- **Bowl volume:** approx. 2,0 l
- **Weight:** approx. 2 kg



Article	Article no.	Quantities
SB 20	01-1096701	per pcs

## DRINKING BOWLS WITH PRESSURE TONGUE



### SB 2

Plastic drinking bowl for horses and cattle.

Reinforcing ridge at the edge of the drinking basin. Dimensional stability can be guaranteed as well as anti-bite resistance. This drinking bowl is equipped with a suppressible pressure tongue and a plastic valve with high water performance. Water connections can either be made on the top or on the bottom side or directly to a horizontally installed water pipe.

With additional groove to retrofit a heating cable.

Circulation suitable!

- **Width:** 220 mm
- **Depth:** 280 mm
- **Hole centre distance:** 100 mm
- **Connection:** R 1/2" inner thread from top or bottom
- **Water flow volume:** approx. 19.6 l/min. at 5 bar
- **Bowl volume:** approx. 1,0 l
- **Weight:** approx. 1 kg

WITH  
HEATING CABLE  
RETROFITTABLE



Article	Article no.	Quantities
SB 2	01-1096210	per pcs
SB 2 blue	01-1096210B	per pcs
SB 2 N (mit low pressure valve until 1 bar)	01-1096211	per pcs
SPARE VALVE	09-0096260	per pcs
LOW PRESSURE SPARE VALVE	09-0096290	per pcs

### HEATING CABLE SB 2 FOR RETROFITTING

Heating cable with integrated thermostat for tempering only the drinking bowl and the drinking valve.



Article	Article no.	Quantities
Heating cable SB 2 / 230 Volt / 33 Watt (frost-free up to approx. -20°C)	01-1096230	per pcs
Heating cable SB 2 / 230 Volt / 45 Watt	01-1096235	per pcs
Heating cable SB 2 / 24 Volt / 33 Watt (frost-free up to approx. -20°C)	01-1096430	per pcs
Heating cable SB 2 / 24 Volt / 45 Watt (frost-free up to approx. -30°C)	01-1096435	per pcs

### PIPE HEAT TRACING CABLE SB 2 FOR RETROFITTING

Pipe heat tracing cable for heating the in order to remain the drinking bowl, valve and pipeline up to 2 meter (min. 1 m, max 2 m) frost free.



Article	Article no.	Quantities
Pipe heat tracing cable SB 2 230 Volt / 54 Watt	01-1096236	per pcs
Pipe heat tracing cable SB 2 230 Volt / 66 Watt	01-1096237	per pcs
Pipe heat tracing cable SB 2 / 24 Volt / 54 Watt (frost-free up to approx. -20°C)	01-1096436	per pcs
Pipe heat tracing cable SB 2 / 24 Volt / 66 Watt (frost-free up to approx. -30°C)	01-1096437	per pcs

## DRINKING BOWLS WITH PRESSURE TONGUE



### SB 2 H WITH HEATING CABLE

Plastic drinking bowl for horses and cattle. Reinforcing ridge at the edge of the drinking basin. Dimensional stability can be guaranteed as well as anti-bite resistance. This drinking bowl is equipped with a suppressible pressure tongue and a plastic valve with high water performance. Water connections can either be made on the top or on the bottom side or directly to a horizontally installed water pipe. With heating cable in order to remain the drinking bowl and valve frost free. The cable contains an integrated thermostat which will switch on if temperature will drop down below +5°C and which will switch off if temperature will rise up to +15°C. Circulation suitable!

- **Width:** 220 mm
- **Depth:** 280 mm
- **Hole centre distance:** 100 mm
- **Connection:** R 1/2" inner thread from top or bottom
- **Water flow volume:** approx. 19.6 l/min. at 5 bar
- **Bowl volume:** approx. 1,0 l
- **Weight:** approx. 1 kg



Antifreeze protection up to approx. -30°C



Article	Article no.	Quantities
SB 2 H with heating cable 230 Volt / 33 Watt (frost-free up to approx. -20°C)	01-1096200	per pcs
SB 2 H with heating cable 230 Volt / 45 Watt (frost-free up to approx. -30°C)	01-1096203	per pcs
SB 2 H with heating cable 24 Volt / 33 Watt (frost-free up to approx. -20°C)	01-1096400	per pcs
SB 2 H with heating cable 24 Volt / 45 Watt (frost-free up to approx. -30°C)	01-1096450	per pcs
SB 2 H low pressure with heating cable 230 Volt / 33 Watt (frost-free up to approx. -20°C)	01-1096201	per pcs
SB 2 H low pressure with heating cable 24 Volt / 33 Watt (frost-free up to approx. -20°C)	01-1096401	per pcs

### SB 2 H RBH WITH PIPE HEAT TRACING CABLE

Plastic drinking bowl for horses and cattle. Reinforcing ridge at the edge of the drinking basin. Dimensional stability can be guaranteed as well as anti-bite resistance. This drinking bowl is equipped with a suppressible pressure tongue and a plastic valve with high water performance. Water connections can either be made on the top or on the bottom side or directly to a horizontally installed water pipe. With pipe heat tracing cable for heating the in order to remain the drinking bowl, valve and pipeline up to 2 meter (min. 1 m, max 2 m) frost free. The cable contains an integrated thermostat which will switch on if temperature will drop down below +5°C and which will switch off if temperature will rise up to +15°C. Circulation suitable!

- **Width:** 220 mm
- **Depth:** 280 mm
- **Hole centre distance:** 100 mm
- **Connection:** R 1/2" inner thread from top or bottom
- **Water flow volume:** approx. 19.6 l/min. at 5 bar
- **Bowl volume:** approx. 1,0 l
- **Weight:** approx. 1 kg



Antifreeze protection up to approx. -30°C



Article	Article no.	Quantities
SB 2 H RBH with pipe heat tracing cable 230 Volt / 54 Watt (frost-free up to approx. -20°C)	01-1096206	per pcs
SB 2 H RBH with pipe heat tracing cable 230 Volt / 66 Watt (frost-free up to approx. -30°C)	01-1096209	per pcs
SB 2 H RBH with pipe heat tracing cable 24 Volt / 54 Watt (frost-free up to approx. -20°C)	01-1096406	per pcs
SB 2 H RBH with pipe heat tracing cable 24 Volt / 66 Watt (frost-free up to approx. -30°C)	01-1096452	per pcs
SB 2 H RBH low pressure with pipe heat tracing cable 230 Volt / 54 Watt (frost-free up to approx. -20°C)	01-1096207	per pcs
SB 2 H RBH low pressure with pipe heat tracing cable 24 Volt / 54 Watt (frost-free up to approx. -20°C)	01-1096407	per pcs

## DRINKING BOWLS WITH PENDULAR VALVE



### SB 22

Plastic drinking bowl for horses and cattle.  
 With 1/2" inner thread for connection from top or bottom.  
 An extra large drinking bowl made of a sturdy bite-resistant plastic.  
 Smooth moving brass pendular valve with water regulating screw.  
 Cleaning is simple due to a removable plastic plug fitted in the middle of the bowl.  
 With additional groove to retrofit a heating cable.  
 Circulation suitable!

- **Width:** 257 mm
- **Depth:** 305 mm
- **Hole centre distance:** 136 x 100 mm
- **Connection:** R 1/2" inner thread from top or bottom
- **Water flow volume:** approx. 11 l/min. at 5 bar
- **Bowl volume:** approx. 2,0 l
- **Weight:** approx. 2 kg



1/2" thread



Article	Article no.	Quantities
SB 22	01-1096705	per pcs
SPARE VALVE brass	09-1096751	per pcs

## HEATING CABLE SB 22/23 FOR RETROFITTING

Heating cable with integrated thermostat for tempering only the drinking bowl and the drinking valve.



Article	Article no.	Quantities
Heating cable SB 22/23 / 230 Volt / 33 Watt (frost-free up to approx. -20°C)	01-1096730	per pcs
Heating cable SB 22/23 / 230 Volt / 45 Watt (frost-free up to approx. -35°C)	01-1096735	per pcs
Heating cable SB 22/23 / 24 Volt / 33 Watt (frost-free up to approx. -20°C)	01-1096740	per pcs
Heating cable SB 22/23 / 24 Volt / 45 Watt (frost-free up to approx. -35°C)	01-1096745	per pcs

## PIPE HEAT TRACING CABLE SB 22/23 FOR RETROFITTING

Pipe heat tracing cable for heating the in order to remain the drinking bowl, valve and pipeline up to 2 meter (min. 1 m, max 2 m) frost free.



Article	Article no.	Quantities
Pipe heat tracing cable SB 22/23 230 Volt / 54 Watt (frost-free up to approx. -20°C)	01-1096736	per pcs
Pipe heat tracing cable SB 22/23 230 Volt / 66 Watt (frost-free up to approx. -35°C)	01-1096737	per pcs
Pipe heat tracing cable SB 22/23 24 Volt / 54 Watt (frost-free up to approx. -20°C)	01-1096746	per pcs
Pipe heat tracing cable SB 22/23 24 Volt / 66 Watt (frost-free up to approx. -35°C)	01-1096747	per pcs

## HEATING CABLE PROTECTION FOR SB 22 & SB 23

The cover plate made of stainless steel protects the heating cable at the watering basin bottom optimally against bites or other damage. The plate is simply attached using the supplied screws on the tank bottom. Suitable for the series H SB 22 (from date of manufacture 07.2013) and all SB 23 H.



Article	Article no.	Quantities
Heating cable protection for SB 22 & SB 23	01-1096702	per pcs

## DRINKING BOWLS WITH PENDULAR VALVE



### SB 22 H WITH HEATING CABLE

Plastic drinking bowl for horses and cattle. With 1/2" inner thread for connection from top or bottom. An extra large drinking bowl made of a sturdy bite-resistant plastic. Smooth moving brass pendular valve with water regulating screw. Cleaning is simple due to a removable plastic plug fitted in the middle of the bowl. With heating cable in order to remain the drinking bowl and valve frost free. The cable contains an integrated thermostat which will switch on if temperature will drop down below +5°C and which will switch off if temperature will rise up to +15°C. Circulation suitable!

- **Width:** 257 mm
- **Depth:** 305 mm
- **Hole centre distance:** 136 x 100 mm
- **Connection:** R 1/2" inner thread from top or bottom
- **Water flow volume:** approx. 11 l/min. at 5 bar
- **Bowl volume:** approx. 2,0 l
- **Weight:** approx. 2 kg

**NEW**



with cover

1/2" thread

Antifreeze protection up to approx. -35°C



Article	Article no.	Quantities
SB 22 H with heating cable 230 Volt / 33 Watt (frost-free up to approx. -20°C)	01-1096710	per pcs
SB 22 H with heating cable 230 Volt / 45 Watt (frost-free up to approx. -35°C)	01-1096711	per pcs
SB 22 H with heating cable 24 Volt / 33 Watt (frost-free up to approx. -20°C)	01-1096720	per pcs
SB 22 H with heating cable 24 Volt / 45 Watt (frost-free up to approx. -35°C)	01-1096721	per pcs

### SB 22 H RBH WITH PIPE HEAT TRACING CABLE

Plastic drinking bowl for horses and cattle. With 1/2" inner thread for connection from top or bottom. An extra large drinking bowl made of a sturdy bite-resistant plastic. Smooth moving brass pendular valve with water regulating screw. Cleaning is simple due to a removable plastic plug fitted in the middle of the bowl. With pipe heat tracing cable for heating the in order to remain the drinking bowl, valve and pipeline up to 2 meter (min. 1 m, max 2 m) frost free. The cable contains an integrated thermostat which will switch on if temperature will drop down below +5°C and which will switch off if temperature will rise up to +15°C. Circulation suitable!

- **Width:** 257 mm
- **Depth:** 305 mm
- **Hole centre distance:** 136 x 100 mm
- **Connection:** R 1/2" inner thread from top or bottom
- **Water flow volume:** approx. 11 l/min. at 5 bar
- **Bowl volume:** approx. 2,0 l
- **Weight:** approx. 2 kg

**NEW**



with cover

**RBH**

Antifreeze protection up to approx. -35°C



Article	Article no.	Quantities
SB 22 H RBH with pipe heat tracing cable 230 Volt / 54 Watt (frost-free up to approx. -20°C)	01-1096716	per pcs
SB 22 H RBH with pipe heat tracing cable 230 Volt / 66 Watt (frost-free up to approx. -35°C)	01-1096717	per pcs
SB 22 H RBH with pipe heat tracing cable 24 Volt / 54 Watt (frost-free up to approx. -20°C)	01-1096726	per pcs
SB 22 H RBH with pipe heat tracing cable 24 Volt / 66 Watt (frost-free up to approx. -35°C)	01-1096727	per pcs

## DRINKING BOWLS WITH PENDULAR VALVE



### SB 23

Plastic drinking bowl for horses and cattle.  
 With 3/4" inner thread for connection from top or bottom.  
 An extra large drinking bowl made of a sturdy bite-resistant plastic.  
 Smooth moving brass pendular valve with water regulating screw.  
 Cleaning is simple due to a removable plastic plug fitted in the middle of the bowl.  
 With additional groove to retrofit a heating cable. Circulation suitable!

- **Width:** 257 mm
- **Depth:** 305 mm
- **Hole centre distance:** 136 x 100 mm
- **Connection:** R 3/4" inner thread from top or bottom
- **Water flow volume:** approx. 12 l/min. at 5 bar
- **Bowl volume:** approx. 2,0 l
- **Weight:** approx. 2 kg



Article	Article no.	Quantities
SB 23	01-1096800	per pcs
SPARE VALVE brass	09-1096815	per pcs

### HEATING CABLE SB 22/23 FOR RETROFITTING

Heating cable with integrated thermostat for tempering only the drinking bowl and the drinking valve.



Article	Article no.	Quantities
Heating cable SB 22/23 / 230 Volt / 33 Watt (frost-free up to approx. -20°C)	01-1096730	per pcs
Heating cable SB 22/23 / 230 Volt / 45 Watt (frost-free up to approx. -35°C)	01-1096735	per pcs
Heating cable SB 22/23 / 24 Volt / 33 Watt (frost-free up to approx. -20°C)	01-1096740	per pcs
Heating cable SB 22/23 / 24 Volt / 45 Watt (frost-free up to approx. -35°C)	01-1096745	per pcs

### PIPE HEAT TRACING CABLE SB 22/23 FOR RETROFITTING

Pipe heat tracing cable for heating the in order to remain the drinking bowl, valve and pipeline up to 2 meter (min. 1 m, max 2 m) frost free.



Article	Article no.	Quantities
Pipe heat tracing cable SB 22/23 230 Volt / 54 Watt (frost-free up to approx. -20°C)	01-1096736	per pcs
Pipe heat tracing cable SB 22/23 230 Volt / 66 Watt (frost-free up to approx. -35°C)	01-1096737	per pcs
Pipe heat tracing cable SB 22/23 24 Volt / 54 Watt (frost-free up to approx. -20°C)	01-1096746	per pcs
Pipe heat tracing cable SB 22/23 24 Volt / 66 Watt (frost-free up to approx. -35°C)	01-1096747	per pcs

### HEATING CABLE PROTECTION FOR SB 22 & SB 23

The cover plate made of stainless steel protects the heating cable at the watering basin bottom optimally against bites or other damage. The plate is simply attached using the supplied screws on the tank bottom. Suitable for the series H SB 22 (from date of manufacture 07.2013) and all SB 23 H.



Article	Article no.	Quantities
Heating cable protection for SB 22 & SB 23	01-1096702	per pcs

## DRINKING BOWLS WITH PENDULAR VALVE



### SB 23 H WITH HEATING CABLE

Plastic drinking bowl for horses and cattle. With 3/4" inner thread for connection from top or bottom. An extra large drinking bowl made of a sturdy bite-resistant plastic. Smooth moving brass pendular valve with water regulating screw. Cleaning is simple due to a removable plastic plug fitted in the middle of the bowl. With heating cable in order to remain the drinking bowl and valve frost free. The cable contains an integrated thermostat which will switch on if temperature will drop down below +5°C and which will switch off if temperature will rise up to +15°C.

Circulation suitable!

- **Width:** 257 mm
- **Depth:** 305 mm
- **Hole centre distance:** 136 x 100 mm
- **Connection:** R 3/4" inner thread from top or bottom
- **Water flow volume:** approx. 11 l/min. at 5 bar
- **Bowl volume:** approx. 2,0 l
- **Weight:** approx. 2 kg

**NEW**



with cover

**3/4" thread**

**Antifreeze protection up to approx. -35°C**



Article	Article no.	Quantities
SB 23 H with heating cable 230 Volt / 33 Watt (frost-free up to approx. -20°C)	01-1096810	per pcs
SB 23 H with heating cable 230 Volt / 45 Watt (frost-free up to approx. -35°C)	01-1096811	per pcs
SB 23 H with heating cable 24 Volt / 33 Watt (frost-free up to approx. -20°C)	01-1096820	per pcs
SB 23 H with heating cable 24 Volt / 45 Watt (frost-free up to approx. -35°C)	01-1096821	per pcs

### SB 23 H RBH WITH PIPE HEAT TRACING CABLE

Plastic drinking bowl for horses and cattle. With 3/4" inner thread for connection from top or bottom. An extra large drinking bowl made of a sturdy bite-resistant plastic. Smooth moving brass pendular valve with water regulating screw. Cleaning is simple due to a removable plastic plug fitted in the middle of the bowl. With pipe heat tracing cable for heating the in order to remain the drinking bowl, valve and pipeline up to 2 meter (min. 1 m, max 2 m) frost free. The cable contains an integrated thermostat which will switch on if temperature will drop down below +5°C and which will switch off if temperature will rise up to +15°C.

Circulation suitable!

- **Width:** 257 mm
- **Depth:** 305 mm
- **Hole centre distance:** 136 x 100 mm
- **Connection:** R 3/4" inner thread from top or bottom
- **Water flow volume:** approx. 11 l/min. at 5 bar
- **Bowl volume:** approx. 2,0 l
- **Weight:** approx. 2 kg

**NEW**



with cover

**RBH**

**Antifreeze protection up to approx. -35°C**



Article	Article no.	Quantities
SB 23 H RBH with pipe heat tracing cable 230 Volt / 54 Watt (frost-free up to approx. -20°C)	01-1096816	per pcs
SB 23 H RBH with pipe heat tracing cable 230 Volt / 66 Watt (frost-free up to approx. -35°C)	01-1096817	per pcs
SB 23 H RBH with pipe heat tracing cable 24 Volt / 54 Watt (frost-free up to approx. -20°C)	01-1096826	per pcs
SB 23 H RBH with pipe heat tracing cable 24 Volt / 66 Watt (frost-free up to approx. -35°C)	01-1096827	per pcs

## DRINKING BOWLS WITH FLOAT VALVE



### SB 112 NT

Plastic drinking bowl for horses, cattle and sheep.

With 1/2" inner thread for connection from top.

Suitable for process and well water. Livestock friendly drinking bowl without pressure tongue, sturdy and antibite resistant.

Possible adaptation of the valve to the local water pressure by two valve nozzles which are included.

With additional groove to retrofit a heating cable.

- **Width:** 240 mm
- **Depth:** 340 mm
- **Hole centre distance:** 100/180 mm
- **Connection:** R 1/2" outer thread (from above)
- **Water flow volume:** approx. 6,2 l/min. at 1-3 bar
- **Bowl volume:** approx. 2,3 l
- **Weight:** approx. 1,7 kg

**WITH  
HEATING CABLE  
RETROFITTABLE**



Article	Article no.	Quantities
SB 112 NT	00-0075050	per pcs
SPARE FLOATER VALVE brass	09-0061300	per pcs

### CONVERSION KIT FOR SB 104 NT TO SB 110 NT / SB 112 NT

Set for converting the already existing SB104 drinking bowl (with plastic valve) into the variant SB110 bowl (with brass valve). The conversion is recommended especially in case well water is used due to the fact the brass valve is impervious to dirt.



Article	Article no.	Quantities
CONVERSION KIT FOR SB 104 NT TO SB 110 NT / SB 112 NT	09-0061350	per pcs

### HEATING CABLE SB 112/113 FOR RETROFITTING

Heating cable with integrated thermostat for tempering only the drinking bowl and the drinking valve.



Article	Article no.	Quantities
Heating cable SB 112/113 ZPS 230 Volt / 45 Watt (frost-free up to approx. -25°C)	00-0075174	per pcs
Heating cable SB 112/113 ZPS 24 Volt / 45 Watt (frost-free up to approx. -25°C)	00-0075184	per pcs

### PIPE HEAT TRACING CABLE SB 112/113 FOR RETROFITTING

Pipe heat tracing cable for heating the in order to remain the drinking bowl, valve and pipeline up to 2 meter (min. 1 m, max 2 m) frost free.



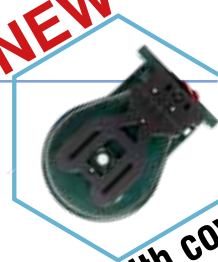
Article	Article no.	Quantities
Pipe heat tracing cable SB 112/113 230 Volt / 66 Watt (frost-free up to approx. -25°C)	00-0075154	per pcs
Pipe heat tracing cable SB 112/113 24 Volt / 66 Watt (frost-free up to approx. -25°C)	00-0075164	per pcs



## DRINKING BOWLS WITH FLOAT VALVE



**NEW**



with cover

### SB 112 H ZPS WITH HEATING CABLE

Plastic drinking bowl for horses, cattle and sheep. With 1/2" inner thread for connection from top. Suitable for process and well water. Livestock friendly drinking bowl without pressure tongue, sturdy and antibite resistant. Possible adaptation of the valve to the local water pressure by two valve nozzles which are included. With heating cable in order to remain the drinking bowl and valve frost free.

The cable contains an integrated thermostat which will switch on if temperature will drop down below +5°C and which will switch off if temperature will rise up to +15°C. Additional T-piece for installation in a circulation system.

Circulation suitable!

- **Width:** 240 mm
- **Depth:** 340 mm
- **Hole centre distance:** 100/180 mm
- **Connection:** R 1/2" outer thread (from above)
- **Water flow volume:** approx. 6,2 l/min. at 1-3 bar
- **Bowl volume:** approx. 2,3 l
- **Weight:** approx. 1,7 kg



Antifreeze protection up to approx. **-25°C**



Article	Article no.	Quantities
SB 112 H ZPS with heating cable 230 Volt / 45 Watt (frost-free up to approx. -25°C)	00-0075059	per pcs
SB 112 H ZPS with heating cable 24 Volt / 45 Watt (frost-free up to approx. -25°C)	00-0075069	per pcs

### SB 112 NT H RBH WITH PIPE HEAT TRACING CABLE

Plastic drinking bowl for horses, cattle and sheep. With 1/2" inner thread for connection from top. Suitable for process and well water. Livestock friendly drinking bowl without pressure tongue, sturdy and antibite resistant. Possible adaptation of the valve to the local water pressure by two valve nozzles which are included. With pipe heat tracing cable for heating the in order to remain the drinking bowl, valve and pipeline up to 2 meter (min. 1 m, max 2 m) frost free. The cable contains an integrated thermostat which will switch on if temperature will drop down below +5°C and which will switch off if temperature will rise up to +15°C.

- **Width:** 240 mm
- **Depth:** 340 mm
- **Hole centre distance:** 100/180 mm
- **Connection:** R 1/2" outer thread (from above)
- **Water flow volume:** approx. 6,2 l/min. at 1-3 bar
- **Bowl volume:** approx. 2,3 l
- **Weight:** approx. 1,7 kg

Antifreeze protection up to approx. **-25°C**



**NEW**



with cover

Article	Article no.	Quantities
SB 112 NT H RBH with pipe heat tracing cable 230 Volt / 66 Watt (frost-free up to approx. -25°C)	00-0075054	per pcs
SB 112 NT H RBH with pipe heat tracing cable 24 Volt / 66 Watt (frost-free up to approx. -25°C)	00-0075064	per pcs

### HEATING CABLE PROTECTION FOR SB 112 & SB 113

The cover plate made of stainless steel protects the heating cable at the watering basin bottom optimally against bites or other damage. The plate is simply attached using the supplied screws on the tank bottom. Suitable for the series SB 2 H, H SB 22, SB 112 H (From date of manufacture 07.2013) and all SB 23 and SB 113 H.



Article	Article no.	Quantities
Heating cable protection for SB 112 & SB 113	00-0075052	per pcs

## DRINKING BOWLS WITH FLOAT VALVE



### SB 113 NT

Plastic drinking bowl for horses, cattle and sheep.

With 3/4" inner thread for connection from top.

Suitable for process and well water. Livestock friendly drinking bowl without pressure tongue, sturdy and antibite resistant.

Possible adaptation of the valve to the local water pressure by two valve nozzles which are included.

With additional groove to retrofit a heating cable.

- **Width:** 240 mm
- **Depth:** 340 mm
- **Hole centre distance:** 100/180 mm
- **Connection:** R 3/4" outer thread (from above)
- **Water flow volume:** approx. 7,2 l/min. at 1-3 bar
- **Bowl volume:** approx. 2,3 l
- **Weight:** approx. 1,7 kg



Article	Article no.	Quantities
SB 113 NT	00-0076050	per pcs
SPARE FLOATER VALVE brass	09-0076000	per pcs

### HEATING CABLE SB 112/113 FOR RETROFITTING

Heating cable with integrated thermostat for tempering only the drinking bowl and the drinking valve.



Article	Article no.	Quantities
Heating cable SB 112/113 ZPS 230 Volt / 45 Watt (frost-free up to approx. -25°C)	00-0075174	per pcs
Heating cable SB 112/113 ZPS 24 Volt / 45 Watt (frost-free up to approx. -25°C)	00-0075184	per pcs

### PIPE HEAT TRACING CABLE SB 112/113 FOR RETROFITTING

Pipe heat tracing cable for heating the in order to remain the drinking bowl, valve and pipeline up to 2 meter (min. 1 m, max 2 m) frost free.



Article	Article no.	Quantities
Pipe heat tracing cable SB 112/113 230 Volt / 66 Watt (frost-free up to approx. -25°C)	00-0075154	per pcs
Pipe heat tracing cable SB 112/113 24 Volt / 66 Watt (frost-free up to approx. -25°C)	00-0075164	per pcs

### HEATING CABLE PROTECTION FOR SB 112 & SB 113

The cover plate made of stainless steel protects the heating cable at the watering basin bottom optimally against bites or other damage. The plate is simply attached using the supplied screws on the tank bottom. Suitable for the series SB 2 H, H SB 22, SB 112 H (From date of manufacture 07.2013) and all SB 23 and SB 113 H.



Article	Article no.	Quantities
Heating cable protection for SB 112 & SB 113	00-0075052	per pcs

## DRINKING BOWLS WITH FLOAT VALVE



### SB 113 H ZPS WITH HEATING CABLE

Plastic drinking bowl for horses, cattle and sheep.

With 3/4" inner thread for connection from top.

Suitable for process and well water. Livestock friendly drinking bowl without pressure tongue, sturdy and antibite resistant.

Possible adaptation of the valve to the local water pressure by two valve nozzles which are included.

With heating cable in order to remain the drinking bowl and valve frost free.

The cable contains an integrated thermostat which will switch on if temperature will drop down below +5°C and which will switch off if temperature will rise up to +15°C.

Additional T-piece for installation in a circulation system.

Circulation suitable!

- **Width:** 240 mm
- **Depth:** 340 mm
- **Hole centre distance:** 100/180 mm
- **Connection:** R 3/4" outer thread (from above)
- **Water flow volume:** approx. 7,2 l/min. at 1-3 bar
- **Bowl volume:** approx. 2,3 l
- **Weight:** approx. 1,7 kg



Antifreeze protection up to approx. -25°C



3/4" thread



Article	Article no.	Quantities
SB 113 H ZPS with heating cable 230 Volt / 45 Watt (frost-free up to approx. -25°C)	00-0076059	per pcs
SB 113 H ZPS with heating cable 24 Volt / 45 Watt (frost-free up to approx. -25°C)	00-0076069	per pcs

### SB 113 NT H RBH WITH PIPE HEAT TRACING CABLE

Plastic drinking bowl for horses, cattle and sheep.

With 3/4" inner thread for connection from top.

Suitable for process and well water. Livestock friendly drinking bowl without pressure tongue, sturdy and antibite resistant.

Possible adaptation of the valve to the local water pressure by two valve nozzles which are included.

With pipe heat tracing cable for heating the in order to remain the drinking bowl, valve and pipeline up to 2 meter (min. 1 m, max 2 m) frost free.

The cable contains an integrated thermostat which will switch on if temperature will drop down below +5°C and which will switch off if temperature will rise up to +15°C.

- **Width:** 240 mm
- **Depth:** 340 mm
- **Hole centre distance:** 100/180 mm
- **Connection:** R 3/4" outer thread (from above)
- **Water flow volume:** approx. 7,2 l/min. at 1-3 bar
- **Bowl volume:** approx. 2,3 l
- **Weight:** approx. 1,7 kg

Antifreeze protection up to approx. -25°C



RBH



Article	Article no.	Quantities
SB 113 NT H RBH with pipe heat tracing cable 230 Volt / 66 Watt (frost-free up to approx. -25°C)	00-0076054	per pcs
SB 113 NT H RBH with pipe heat tracing cable 24 Volt / 66 Watt (frost-free up to approx. -25°C)	00-0076064	per pcs

# The Bacto® Protect Series

It is well known water is the most important nourishment for all living beings. Therefore it must be available in sufficient quantity and best quality.

However, the quality of drinking water can seriously be degraded due to polluted pipelines but also by polluted drinking bowls which are contaminated with bacteria and germs.

Especially at animal drinking bowls and troughs bacteria and germs gather and reproduce undisturbed e.g. due to saliva of animals and due to uneaten food.

This is where our series "Bacto-Protect" takes place. The products of this series are made of a special plastic which has hygienic improving characteristics.

An advantage of these products is that the hygienic improving characteristics are present in the whole structure of the plastic so that the functionality is still given even in case the surface might be damaged.

The drinking bowls should be cleaned in regular intervals especially if they get heavily polluted during operation (remnants of hay, dust or similar things).

This should be done in order to support the hygienic improving characteristics in an optimal way and to maintain the high effectiveness.

- Drinking bowl with hygienic improving characteristic. (even with a damaged surface)
- protects up to 10 years

## SB 1 BACTO® PROTECT

Plastic drinking bowl with hygienic improving characteristic. Suitable for horses and cattle.

Reinforcing ridge at the edge of the drinking basin. Dimensional stability can be guaranteed as well as anti-bite resistance. This drinking bowl is equipped with a suppressible pressure tongue and a plastic valve with high water performance. Water connections can either be made on the top or on the bottom side or directly to a horizontally installed water pipe.

Circulation suitable!

- **Width:** 220 mm
- **Depth:** 280 mm
- **Hole centre distance:** 100 mm
- **Connection:** R 1/2" inner thread from top or bottom
- **Water flow volume:** approx. 19.6 l/min. at 5 bar
- **Bowl volume:** approx. 1,0 l
- **Weight:** approx. 1 kg



Article	Article no.	Quantities
SB 1 BACTO® PROTECT	01-1097000	per pcs / 1 per carton
SPARE VALVE	09-0096260	per pcs



## BACTO® PROTECT DRINKING BOWLS WITH PRESSURE TONGUE

### SB 2 BACTO® PROTECT

Plastic drinking bowl with hygienic improving characteristic.  
 Suitable for horses and cattle. Reinforcing ridge at the edge of the drinking basin.  
 Dimensional stability can be guaranteed as well as anti-bite resistance. This drinking bowl is equipped with a suppressible pressure tongue and a plastic valve with high water performance. Water connections can either be made on the top or on the bottom side or directly to a horizontally installed water pipe.  
 With additional groove to retrofit a heating cable.  
 Circulation suitable!

- **Width:** 220 mm
- **Depth:** 280 mm
- **Hole centre distance:** 100 mm
- **Connection:** R 1/2" inner thread from top or bottom
- **Water flow volume:** approx. 19.6 l/min. at 5 bar
- **Bowl volume:** approx. 1,0 l
- **Weight:** approx. 1 kg



Article	Article no.	Quantities
SB 2 BACTO® PROTECT	01-1097100	per pcs
SPARE VALVE	09-0096260	per pcs

### SB 2 H RBH BACTO® PROTECT

Plastic drinking bowl with hygienic improving characteristic.  
 Suitable for horses and cattle. Reinforcing ridge at the edge of the drinking basin.  
 Dimensional stability can be guaranteed as well as anti-bite resistance. This drinking bowl is equipped with a suppressible pressure tongue and a plastic valve with high water performance. Water connections can either be made on the top or on the bottom side or directly to a horizontally installed water pipe. With pipe heat tracing cable for heating the in order to remain the drinking bowl, valve and pipeline up to 2 meter (min. 1 m, max 2 m) frost free. The cable contains an integrated thermostat which will switch on if temperature will drop down below +5°C and which will switch off if temperature will rise up to +15°C.  
 Circulation suitable!

- **Width:** 220 mm
- **Depth:** 280 mm
- **Hole centre distance:** 100 mm
- **Connection:** R 1/2" inner thread from top or bottom
- **Water flow volume:** approx. 19.6 l/min. at 5 bar
- **Bowl volume:** approx. 1,0 l
- **Weight:** approx. 1 kg



Article	Article no.	Quantities
SB 2 H RBH BACTO® PROTECT with pipe heat tracing cable 230 Volt / 66 Watt (frost-free up to approx. -30°C)	01-1097110	per pcs
SB 2 H RBH BACTO® PROTECT with pipe heat tracing cable 24 Volt / 66 Watt (frost-free up to approx. -30°C)	01-1097160	per pcs

## BACTO® PROTECT DRINKING BOWLS WITH PENDULAR VALVE



### SB 22 BACTO® PROTECT

Plastic drinking bowl with hygienic improving characteristic. Suitable for horses and cattle. With 1/2" inner thread for connection from top or bottom. An extra large drinking bowl made of a sturdy bite-resistant plastic. Smooth moving brass pendular valve with water regulating screw. Cleaning is simple due to a removable plastic plug fitted in the middle of the bowl. With additional groove to retrofit a heating cable. Circulation suitable!

- **Width:** 257 mm
- **Depth:** 305 mm
- **Hole centre distance:** 136 x 100 mm
- **Connection:** R 1/2" inner thread from top or bottom
- **Water flow volume:** approx. 11 l/min. at 5 bar
- **Bowl volume:** approx. 2,0 l
- **Weight:** approx. 2 kg

**WITH HEATING CABLE RETROFITTABLE**



**1/2" thread**



Article	Article no.	Quantities
SB 22 BACTO® PROTECT	01-1097200	per pcs
SPARE VALVE brass	09-1096751	per pcs

### SB 22 H BACTO® PROTECT WITH HEATING CABLE

Plastic drinking bowl with hygienic improving characteristic. Suitable for horses and cattle. With 1/2" inner thread for connection from top or bottom. An extra large drinking bowl made of a sturdy bite-resistant plastic. Smooth moving brass pendular valve with water regulating screw. Cleaning is simple due to a removable plastic plug fitted in the middle of the bowl. With heating cable in order to remain the drinking bowl and valve frost free. The cable contains an integrated thermostat which will switch on if temperature will drop down below +5°C and which will switch off if temperature will rise up to +15°C. Circulation suitable!

- **Width:** 257 mm
- **Depth:** 305 mm
- **Hole centre distance:** 136 x 100 mm
- **Connection:** R 1/2" inner thread from top or bottom
- **Water flow volume:** approx. 11 l/min. at 5 bar
- **Bowl volume:** approx. 2,0 l
- **Weight:** approx. 2 kg

**Antifreeze protection up to approx. -35°C**



**1/2" thread**



Article	Article no.	Quantities
SB 22 H BACTO® PROTECT with heating cable 230 Volt / 33 Watt (frost-free up to approx. -20°C)	01-1097201	per pcs
SB 22 H BACTO® PROTECT with heating cable 230 Volt / 45 Watt (frost-free up to approx. -35°C)	01-1097205	per pcs
SB 22 H BACTO® PROTECT with heating cable 24 Volt / 33 Watt (frost-free up to approx. -20°C)	01-1097250	per pcs
SB 22 H BACTO® PROTECT with heating cable 24 Volt / 45 Watt (frost-free up to approx. -35°C)	01-1097255	per pcs

## BACTO® PROTECT DRINKING BOWLS WITH PENDULAR VALVE

### SB 22 H RBH BACTO® PROTECT WITH PIPE HEAT TRACING CABLE

Plastic drinking bowl with hygienic improving characteristic.

Suitable for horses and cattle.

With 1/2" inner thread for connection from top or bottom.

An extra large drinking bowl made of a sturdy bite-resistant plastic.

Smooth moving brass pendular valve with water regulating screw.

Cleaning is simple due to a removable plastic plug fitted in the middle of the bowl.

With pipe heat tracing cable for heating the in order to remain the drinking bowl, valve and pipeline up to 2 meter (min. 1 m, max 2 m) frost free.

The cable contains an integrated thermostat which will switch on if temperature will drop down below +5°C and which will switch off if temperature will rise up to +15°C.

Circulation suitable!

- **Width:** 257 mm
- **Depth:** 305 mm
- **Hole centre distance:** 136 x 100 mm
- **Connection:** R 1/2" inner thread from top or bottom
- **Water flow volume:** approx. 11 l/min. at 5 bar
- **Bowl volume:** approx. 2,0 l
- **Weight:** approx. 2 kg

**Antifreeze  
protection up to  
approx.  
-35°C**



Article	Article no.	Quantities
SB 22 H RBH BACTO® PROTECT with pipe heat tracing cable 230 Volt / 66 Watt (frost-free up to approx. -35°C)	01-1097210	per pcs
SB 22 H RBH BACTO® PROTECT with pipe heat tracing cable 24 Volt / 66 Watt (frost-free up to approx. -35°C)	01-1097260	per pcs

### HEATING CABLE PROTECTION FOR SB 22 & SB 23

The cover plate made of stainless steel protects the heating cable at the watering basin bottom optimally against bites or other damage. The plate is simply attached using the supplied screws on the tank bottom. Suitable for the series H SB 22 (from date of manufacture 07.2013) and all SB 23 H.



Article	Article no.	Quantities
Heating cable protection for SB 22 & SB 23	01-1096702	per pcs

## BACTO® PROTECT DRINKING BOWLS WITH PENDULAR VALVE



### SB 23 BACTO® PROTECT

Plastic drinking bowl with hygienic improving characteristic. Suitable for horses and cattle. With 3/4" inner thread for connection from top or bottom. An extra large drinking bowl made of a sturdy bite-resistant plastic. Smooth moving brass pendular valve with water regulating screw. Cleaning is simple due to a removable plastic plug fitted in the middle of the bowl. With additional groove to retrofit a heating cable. Circulation suitable!

- **Width:** 257 mm
- **Depth:** 305 mm
- **Hole centre distance:** 136 x 100 mm
- **Connection:** R 3/4" inner thread from top or bottom
- **Water flow volume:** approx. 12 l/min. at 5 bar
- **Bowl volume:** approx. 2,0 l
- **Weight:** approx. 2 kg



3/4" thread



Article	Article no.	Quantities
SB 23 BACTO® PROTECT	01-1097500	per pcs
SPARE VALVE brass	09-1096815	per pcs

### SB 23 H BACTO® PROTECT WITH HEATING CABLE

Plastic drinking bowl with hygienic improving characteristic. Suitable for horses and cattle. With 3/4" inner thread for connection from top or bottom. An extra large drinking bowl made of a sturdy bite-resistant plastic. Smooth moving brass pendular valve with water regulating screw. Cleaning is simple due to a removable plastic plug fitted in the middle of the bowl. With heating cable in order to remain the drinking bowl and valve frost free. The cable contains an integrated thermostat which will switch on if temperature will drop down below +5°C and which will switch off if temperature will rise up to +15°C. Circulation suitable!

- **Width:** 257 mm
- **Depth:** 305 mm
- **Hole centre distance:** 136 x 100 mm
- **Connection:** R 3/4" inner thread from top or bottom
- **Water flow volume:** approx. 11 l/min. at 5 bar
- **Bowl volume:** approx. 2,0 l
- **Weight:** approx. 2 kg



3/4" thread



Article	Article no.	Quantities
SB 23 H BACTO® PROTECT with heating cable 230 Volt / 33 Watt (frost-free up to approx. -20°C)	01-1097501	per pcs
SB 23 H BACTO® PROTECT with heating cable 230 Volt / 45 Watt (frost-free up to approx. -35°C)	01-1097505	per pcs
SB 23 H BACTO® PROTECT with heating cable 24 Volt / 33 Watt (frost-free up to approx. -20°C)	01-1097550	per pcs
SB 23 H BACTO® PROTECT with heating cable 24 Volt / 45 Watt (frost-free up to approx. -35°C)	01-1097555	per pcs



## BACTO® PROTECT DRINKING BOWLS WITH PENDULAR VALVE

### SB 23 H RBH BACTO® PROTECT WITH PIPE HEAT TRACING CABLE

Plastic drinking bowl with hygienic improving characteristic.  
 Suitable for horses and cattle.  
 With 3/4" inner thread for connection from top or bottom.  
 An extra large drinking bowl made of a sturdy bite-resistant plastic.  
 Smooth moving brass pendular valve with water regulating screw.  
 Cleaning is simple due to a removable plastic plug fitted in the middle of the bowl.  
 With pipe heat tracing cable for heating the in order to remain the drinking bowl, valve and pipeline up to 2 meter (min. 1 m, max 2 m) frost free.  
 The cable contains an integrated thermostat which will switch on if temperature will drop down below +5°C and which will switch off if temperature will rise up to +15°C.  
 Circulation suitable!

- **Width:** 257 mm
- **Depth:** 305 mm
- **Hole centre distance:** 136 x 100 mm
- **Connection:** R 3/4" inner thread from top or bottom
- **Water flow volume:** approx. 12 l/min. at 5 bar
- **Bowl volume:** approx. 2,0 l
- **Weight:** approx. 2 kg

**Antifreeze  
 protection up to  
 approx.  
 -35°C**



Article	Article no.	Quantities
SB 23 H RBH BACTO® PROTECT with pipe heat tracing cable 230 Volt / 66 Watt (frost-free up to approx. -35°C)	01-1097510	per pcs
SB 23 H RBH BACTO® PROTECT with pipe heat tracing cable 24 Volt / 66 Watt (frost-free up to approx. -35°C)	01-1097560	per pcs

### HEATING CABLE PROTECTION FOR SB 22 & SB 23

The cover plate made of stainless steel protects the heating cable at the watering basin bottom optimally against bites or other damage. The plate is simply attached using the supplied screws on the tank bottom. Suitable for the series H SB 22 (from date of manufacture 07.2013) and all SB 23 H.



Article	Article no.	Quantities
Heating cable protection for SB 22 & SB 23	01-1096702	per pcs

## BACTO® PROTECT DRINKING BOWLS WITH FLOAT VALVE



### SB 112 NT BACTO® PROTECT

Plastic drinking bowl with hygienic improving characteristic.  
Suitable for horses and cattle.

With 1/2" inner thread for connection from top.

Suitable for process and well water. Livestock friendly drinking bowl without pressure tongue, sturdy and antibite resistant.

Possible adaptation of the valve to the local water pressure by two valve nozzles which are included.

With additional groove to retrofit a heating cable.

- **Width:** 240 mm
- **Depth:** 340 mm
- **Hole centre distance:** 100/180 mm
- **Connection:** R 1/2" outer thread (from above)
- **Water flow volume:** approx. 6,2 l/min. at 1-3 bar
- **Bowl volume:** approx. 2,3 l
- **Weight:** approx. 1,7 kg

**WITH HEATING CABLE RETROFITTABLE**



Article	Article no.	Quantities
SB 112 NT BACTO® PROTECT	01-1097300	per pcs
SPARE FLOATER VALVE brass	09-0061305	per pcs

### SB 112 H RBH BACTO® PROTECT WITH PIPE HEAT TRACING CABLE

Plastic drinking bowl with hygienic improving characteristic.  
Suitable for horses, cattle and sheep.

With 1/2" inner thread for connection from top.

Suitable for process and well water. Livestock friendly drinking bowl without pressure tongue, sturdy and antibite resistant.

Possible adaptation of the valve to the local water pressure by two valve nozzles which are included.

With pipe heat tracing cable for heating the in order to remain the drinking bowl, valve and pipeline up to 2 meter (min. 1 m, max 2 m) frost free.

The cable contains an integrated thermostat which will switch on if temperature will drop down below +5°C and which will switch off if temperature will rise up to +15°C.

- **Width:** 240 mm
- **Depth:** 340 mm
- **Hole centre distance:** 100/180 mm
- **Connection:** R 1/2" outer thread (from above)
- **Water flow volume:** approx. 6,2 l/min. at 1-3 bar
- **Bowl volume:** approx. 2,3 l
- **Weight:** approx. 1,7 kg

**Antifreeze protection up to approx. -25°C**



Article	Article no.	Quantities
SB 112 H RBH BACTO® PROTECT with pipe heat tracing cable 230 Volt / 66 Watt (frost-free up to approx. -25°C)	01-1097310	per pcs
SB 112 H RBH BACTO® PROTECT with pipe heat tracing cable 24 Volt / 66 Watt (frost-free up to approx. -25°C)	01-1097360	per pcs



## BACTO® PROTECT DRINKING BOWLS WITH FLOAT VALVE

### SB 113 NT BACTO® PROTECT

Plastic drinking bowl with hygienic improving characteristic. Suitable for horses, cattle and sheep. With 3/4" inner thread for connection from top.  
 Suitable for process and well water. Livestock friendly drinking bowl without pressure tongue, sturdy and antibite resistant. Possible adaptation of the valve to the local water pressure by two valve nozzles which are included.  
 With additional groove to retrofit a heating cable.

- **Width:** 240 mm
- **Depth:** 340 mm
- **Hole centre distance:** 100/180 mm
- **Connection:** R 3/4" outer thread (from above)
- **Water flow volume:** approx. 7,2 l/min. at 1-3 bar
- **Bowl volume:** approx. 2,3 l
- **Weight:** approx. 1,7 kg

**WITH HEATING CABLE RETROFITTABLE**



Article	Article no.	Quantities
SB 113 NT BACTO® PROTECT	01-1097600	per pcs
SPARE FLOATER VALVE brass	09-0076000	per pcs

### SB 113 H RBH BACTO® PROTECT WITH PIPE HEAT TRACING CABLE

Plastic drinking bowl with hygienic improving characteristic. Suitable for horses and cattle and sheep. With 3/4" inner thread for connection from top. Suitable for process and well water. Livestock friendly drinking bowl without pressure tongue, sturdy and antibite resistant. Possible adaptation of the valve to the local water pressure by two valve nozzles which are included.  
 With pipe heat tracing cable for heating the in order to remain the drinking bowl, valve and pipeline up to 2 meter (min. 1 m, max 2 m) frost free. The cable contains an integrated thermostat which will switch on if temperature will drop down below +5°C and which will switch off if temperature will rise up to +15°C.

- **Width:** 240 mm
- **Depth:** 340 mm
- **Hole centre distance:** 100/180 mm
- **Connection:** R 3/4" outer thread (from above)
- **Water flow volume:** approx. 7,2 l/min. at 1-3 bar
- **Bowl volume:** approx. 2,3 l
- **Weight:** approx. 1,7 kg

**Antifreeze protection up to approx. -25°C**



Article	Article no.	Quantities
SB 113 H RBH BACTO® PROTECT with pipe heat tracing cable 230 Volt / 66 Watt (frost-free up to approx. -25°C)	01-1097610	per pcs
SB 113 H RBH BACTO® PROTECT with pipe heat tracing cable 24 Volt / 66 Watt (frost-free up to approx. -25°C)	01-1097660	per pcs

### HEATING CABLE PROTECTION FOR SB 112 & SB 113

The cover plate made of stainless steel protects the heating cable at the watering basin bottom optimally against bites or other damage. The plate is simply attached using the supplied screws on the tank bottom. Suitable for the series SB 2 H, H SB 22, SB 112 H (From date of manufacture 07.2013) and all SB 23 and SB 113 H.



Article	Article no.	Quantities
Heating cable protection for SB 112 & SB 113	00-0075052	per pcs

## BACTO® PROTECT DRINKING BOWLS FOR SMALL ANIMALS



### SB 112 WN BACTO® PROTECT

Plastic drinking bowl with hygienic improving characteristic. Suitable for horses and cattle.

With 1/2" inner thread for connection from top.

Suitable for process and well water. Livestock friendly drinking bowl without pressure tongue, sturdy and antibite resistant.

Possible adaptation of the valve to the local water pressure by two valve nozzles which are included.

With additional groove to retrofit a heating cable.

- **Width:** 240 mm
- **Depth:** 340 mm
- **Hole centre distance:** 100/180 mm
- **Connection:** R 1/2" outer thread (from above)
- **Water flow volume:** approx. 6,2 l/min. at 1-3 bar
- **Bowl volume:** approx. 2,3 l
- **Weight:** approx. 1,7 kg



Article	Article no.	Quantities
SB 112 WN BACTO® PROTECT	01-1097700	per pcs
SPARE FLOATER VALVE	09-0050753	per pcs

### SB 12 KU BACTO® PROTECT

Plastic drinking bowl with hygienic improving characteristic.

For calves, sheep, goats and dogs. Small animals can easily operate the pressure tongue.

Flow rate can be regulated by the adjusting screw (regulation possible at high pressure valve only).

- **Width:** 148 mm
- **Depth:** 180 mm
- **Hole centre distance:** 102 mm
- **Connection:** R 1/2 outer thread
- **Water flow volume:** approx. 1,3 l/min. at 1 bar
- **Weight:** 0,6 kg



Article	Article no.	Quantities
SB 12 KU BACTO® PROTECT	01-1097400	per pcs / 2 per carton
SPARE VALVE	09-0112410	per pcs
LOW PRESSURE SPARE VALVE	09-0112270	per pcs



## DRINKING BOWLS FOR SMALL ANIMALS

### SB 510 K

Plastic drinking bowl with pendular valve system for piglets (up to max. 20 kg)  
Reduces water spillage by 90 %.

- **Width:** 100 mm
- **Depth:** 87 mm
- **Hole centre distance:** 76 mm
- **Connection:** R 1/2" outer thread
- **Water flow volume:** approx. 2.8 l/min. at 5 bar
- **Weight:** 0.6 kg



Article	Article no.	Quantities
SB 510 K	01-0113200	per pcs / 4 per carton
SPARE VALVE	09-0113230	per pcs

### SB 12 KU

Plastic drinking bowl for calves, sheep, goats, deer and dogs. Pressure plate easy to operate for the animal. Minimum pressure of just 30 g is required against the pressure plate.

- **Width:** 148 mm
- **Depth:** 180 mm
- **Hole centre distance:** 102 mm
- **Connection:** R 1/2" outer thread
- **Water flow volume:** approx. 1.3 l/min. at 1 bar
- **Weight:** 0.6 kg



Article	Article no.	Quantities
SB 12 KU	01-0116000	per pcs / 2 per carton
SB 12 KU N (low pressureventil bis 1 bar)	01-0117000	per pcs / 2 per carton
SPARE VALVE	09-0112410	per pcs
LOW PRESSURE SPARE VALVE	09-0112270	per pcs

## CIRCULATIONS PUMPS



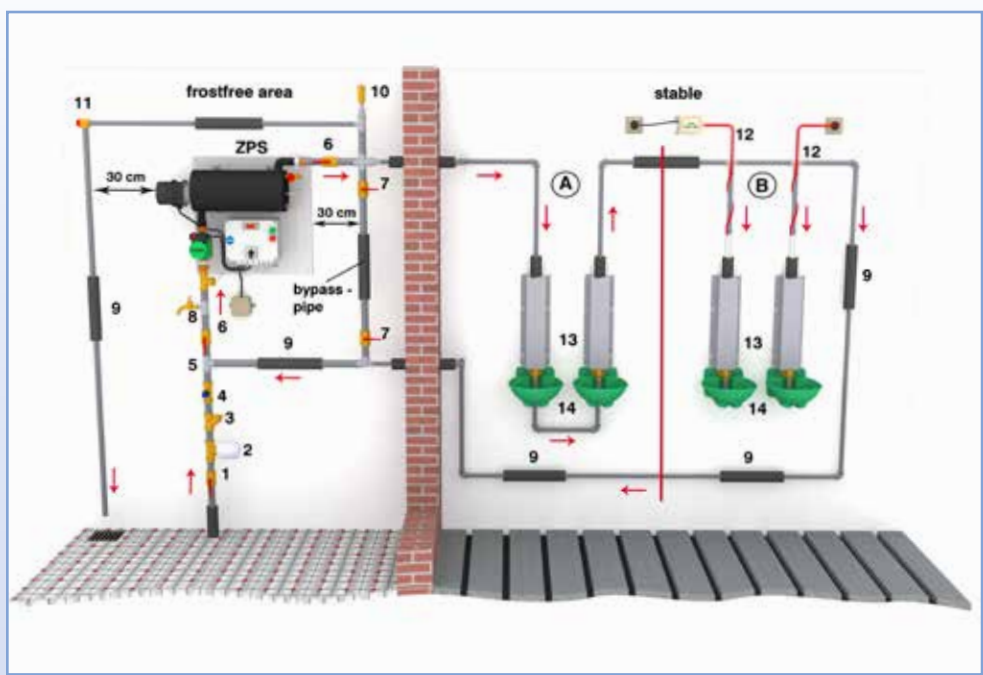
### ZPS PRO KOMFORT

Complete ready for connection and already mounted on a base plate.  
 Closed heating system, maintenance free, therefore particularly suitable for calcareous water (> 14° dH)!  
 Total weight approx. 30kg.  
 Connection cable 1,50 m (without plug) integrated 230 V heating element with a power of 3000 Watt. Incl. on / off control and safety temperature limiter.  
 Heating element control through recording of the return flow temperature.  
 Drinking water approved, high efficiency pump (max.45 Watt) Lower power consumption with the same pump power.  
 Control box with switch for summer and winter operation.  
 Summer operation = automatic short switching-on daily (1/2 hour) of the circulation pump, this prevents locking of the pump armature and -compared to previous pump controllers (permanent operation)- this saves energy costs considerably! The thermostat controlled heating unit is not in a heating mode.  
 Winter operation = permanent pump operation and electronic regulated heating.  
 Water return flow indicator light.  
 Acoustical and optical failure indication through a red warning light and a horn (92-96 dB).  
 Heating element without direct potable water contact!  
 No failure of the installation due to calcification of the heating element due to indirect warming of the potable water!  
 One-time filling of the heating system with water, this serves as transfer medium to the potable water.  
 No calcification of the spirals through which the potable water flows due to a temperature limitation at 35° C (+- 5K).  
 Accessories for the watering circuit (non-return valve, air relief valve, pressure relief valve and T-piece).  
 Residual current circuit breaker (30 mA) needs to be muss provided by the customer.



- Especially suitable for calcareous water (hard water)!
- Significant energy cost reduction by operational control
- Summer and winter operating modes

Article	Article no.	Quantities
ZPS PRO KOMFORT	50-6100550	per pcs



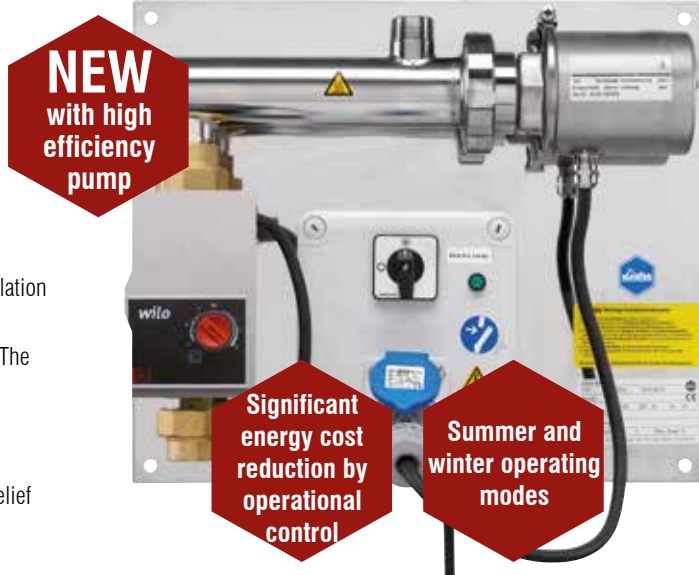
1. stop valve
2. water filter
3. nonreturn valve
4. pressure reducer
5. T-fitting
6. stop valve ZPS
7. stop valve bypass pipe
8. drain tap
9. isolation
10. vent valve
11. pressure relief valve
12. pipe heating cable
13. protection frame
14. drinking bowl

## CIRCULATIONS PUMPS



### ZPS PRO IDEAL

Complete ready for connection and already mounted on a base plate.  
 Drinking water approved, high efficiency pump (max.45 Watt) Lower power consumption with the same pump power.  
 Heating element 3 kW complete with operation indicator light (green), temperature control and safety temperature limiter.  
 Control box with switch for summer and winter operation.  
 Summer operation = automatic short switching-on daily (1/2 hour) of the circulation pump, this prevents locking of the pump armature and -compared to previous pump controllers (permanent operation)- this saves energy costs considerably! The thermostat controlled heating unit is not in a heating mode.  
 Winter operation = permanent pump operation and regulated heating.  
 Connection cable 1,50 m (without plug).  
 Accessories for the watering circuit (non-return valve, air relief valve, pressure relief valve and T-piece).  
 Residual current circuit breaker (30 mA) needs to be provided by the customer.



Article	Article no.	Quantities
ZPS PRO IDEAL	50-6100150	per pcs

### ZPS STANDARD II

Complete ready for connection and already mounted on a base plate.  
 Robust potable and wash water approved red brass pump (max. 99 W).  
 Heating element 3 kW complete with indicator light, temperature control and safety temperature limiter.  
 Connection cable 1,50 m (without mains plug).  
 Accessories for the watering circuit (non-return valve, air relief valve, pressure relief valve and T-piece).  
 Mounting kit (dowel, hanger bolts and nuts).  
 Residual current circuit breaker (30 mA) needs to be provided by the customer.



Article	Article no.	Quantities
ZPS STANDARD II	50-6100050	per pcs

### ZPS ECO II

Complete ready for connection and wall-mounting.  
 Robust potable and wash water approved red brass pump (max. 99 W).  
 Heating element 3 kW complete with indicator light, temperature control and safety temperature limiter.  
 Connection cable 1,50 m (without mains plug).  
 Accessories for the watering circuit (non-return valve, air relief valve, pressure relief valve and T-piece).  
 Mounting kit (dowel, hanger bolts and nuts).  
 Residual current circuit breaker (30 mA) needs to be provided by the customer.



Article	Article no.	Quantities
ZPS ECO II	50-6100000	per pcs

## CIRCULATION PUMP ACCESSORIES



### THERMOMETERSET

For the installation in circulation units, consists of:  
2 thermometers 0-60° C  
2 brass made restricted fittings  
2 brass made T-junctions  
4 brass made double nipples



Article	Article no.	Quantities
THERMOMETERSET	590020650	per pcs

### DFA FLOW INDICATOR

Indicates the activity of the circulation device.



Article	Article no.	Quantities
DFA FLOW INDICATOR	59-0050418	per pcs





## WATERING NIPPLES

### ST 7

Heavy duty brass nipple drinker for bulls and pigs. Also suitable for calves. Water flow adjustable.

- **Depth:** 97 mm
- **Connection:** R 1/2" outer thread
- **Water flow volume:** 2.3 l/min. at 5 bar
- **Weight:** approx. 385 g



Article	Article no.	Quantities
ST 7	02-0097000	per pcs

### ST 101/4

Stainless steel nipple drinker with water flow regulation and filter for piglets. For water pressures up to a max. 4 bar. Also suitable for water tanks (low pressure).

- **Depth:** 55 mm
- **Connection:** R 1/2" outer thread
- **Water flow volume:** 4 l/min. at 5 bar
- **Weight:** approx. 90 g



Article	Article no.	Quantities
ST 101/4	02-1040200	per pcs

### ST 909/4

Stainless steel nipple drinker with water flow regulation and filter for pigs. For water pressures up to a max. 4 bar. Also suitable for water tanks (low pressure).

- **Depth:** 58 mm
- **Connection:** R 1/2" outer thread
- **Water flow volume:** 2.3 l/min. at 5 bar
- **Weight:** approx. 156 g

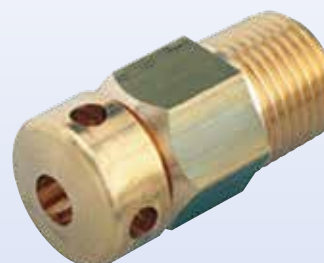


Article	Article no.	Quantities
ST 909/4	02-1020100	per pcs

### SN 1

Trough sprayer-nipple with 5 sprayer holes, with brass connection.

- **Depth:** 30 mm
- **Connection:** R 1/2" outer thread
- **Water flow volume:** approx. 3 l/min. at 3 bar, approx. 4 l/min. at 5 bar
- **Weight:** approx. 116 g



Article	Article no.	Quantities
SN 1	02-0106000	per pcs

## STAINLESS STEEL DRINKING BOWLS

### SB 30

Extremely sturdy water bowl made of high quality stainless steel and fully machined pendulum valve made from brass with high water flow.

Especially suitable for cattle and horses.

Ideal due to the larger valve housing for circulation systems.

- **Width:** 265 mm
- **Working radius:** 300 mm
- **Hole centre distance:** 76 x 60 mm
- **Connection:** R 3/4" inner thread on top and bottom (Incl. Reducer 1/2")
- **Water low:** approx. 22 l/min. at 5 bar
- **Volume:** approx. 3,8 l
- **Weight:** approx. 3,5 kg



Article	Article no.	Quantities
SB 30	01-1095400	per pcs / 1 per carton



## CAST IRON DRINKING BOWLS WITH INTEGRATED HEATING SYSTEM

### SB 88 H

24V drinker for cattle and horses, cast iron with special coating (WBS - fluidized bed coating), to protect against corrosion and for longer durability. Bowl complete with integrated heating element (60 watts) which guarantees frost protection of the bowl and brass valve in a surrounding temperature of up to  $-20^{\circ}\text{C}$ . The feeder clamp for the heating cable 24 V (for the water pipe) is integrated. Sufficient water output, adjustable water intake, sunken in stainless-steel pressure plate. Several bowls may be connected to one transformer. It is recommended to use a thermostat with an automatic on/off switch.

- **Width:** 242 mm
- **Depth:** 350 mm
- **Hole centre distance:** 76 x 100 mm
- **Connection:** R 1/2" inner thread from top or bottom or side
- **Heat output:** 60 Watt
- **Water flow volume:** approx. 16 l/min. at 5 bar

Antifreeze protection up to approx.  $-20^{\circ}\text{C}$



Article	Article no.	Quantities
SB 88 H 24 Volt / 60 Watt (frost-free up to approx. $-20^{\circ}\text{C}$ )	13-0500003	per pcs
SPARE VALVE	09-1095302	per pcs
T-PIECE for drinking bowl SB 88 H	09-1094102	per pcs

### SB 88 H ZPS

24V drinker for cattle and horses, cast iron with special coating (WBS - fluidized bed coating), to protect against corrosion and for longer durability. Bowl complete with integrated heating element (60 watts) which guarantees frost protection of the bowl and brass valve in a surrounding temperature of up to  $-20^{\circ}\text{C}$ . With built-in T-pieces for connection to a circulation pump system (ZPS). The feeder clamp for the heating cable 24 V (for the water pipe) is integrated. Sufficient water output, sunken in stainless-steel pressure plate. Several bowls may be connected to one transformer. It is recommended to use a thermostat with an automatic on/off switch.

- **Width:** 242 mm
- **Depth:** 350 mm
- **Hole centre distance:** 76 x 100 mm
- **Connection:** R 1/2" inner thread from top or bottom or side
- **Heat output:** 60 Watt
- **Water flow volume:** approx. 16 l/min. at 5 bar

Antifreeze protection up to approx.  $-20^{\circ}\text{C}$



Article	Article no.	Quantities
SB 88 H ZPS 24 Volt / 60 Watt (frost-free up to approx. $-20^{\circ}\text{C}$ )	13-0500004	per pcs
SPARE VALVE	09-1095301	per pcs

### THERMOSTAT FOR SB 88 H

Automatic on/off switching unit for the SB 88 H. Switches on in a surrounding temperature of approx.  $+2^{\circ}\text{C}$  and off a approx  $+5^{\circ}\text{C}$ . Complete with sensor protective tube. Resilient up to max. 384 watt (max. 6 SB 88 H)



Article	Article no.	Quantities
THERMOSTAT for SB 88 H	13-0500070	per pcs

## CAST IRON DRINKING BOWLS

### SB 92

The cast iron drinking bowl with a special powder coating and special "perforated" stainless steel pressure plate to avoid water losses.

Plastic valve with high water output. Valve spring made of stainless steel.

May be equipped with heating sonde.

- **Width:** 270 mm
- **Depth:** 300 mm
- **Hole centre distance:** 76 x 90 mm
- **Connection:** R 1/2" inner thread from top or bottom
- **Water flow volume:** approx. 17 l/min. at 5 bar
- **Weight:** approx. 8 kg



Article	Article no.	Quantities
SB 92	01-1095250	per pcs
ERSATZVENTIL FÜR TRÄNKEBECKEN SB 92	09-0096270	per pcs

### SB 800/91

The cast iron drinking bowl with special coating in enamel quality.

With sinked - in stainless steel pressure plate, plastic valve with high water output and animal friendly shaped bowl. Valve spring made of stainless steel. May be upgraded with heating sonde.

- **Width:** 240 mm
- **Depth:** 320 mm
- **Hole centre distance:** 76 x 100 mm
- **Connection:** R 1/2" inner thread from top or bottom
- **Water flow volume:** approx. 17 l/min. at 5 bar
- **Weight:** approx. 7.5 kg



Article	Article no.	Quantities
SB 800/91	01-1095300	per pcs
SPARE VALVE FOR SB 800/91	09-0096280	per pcs

### UT 400 PK / UT 400 SDPK

Cast-iron drinking bowl for cattle and horses. Coated in a hard plastic. With stainless steel pressure plate and valve spring. Plastic valve for high flow water rate. May be equipped with heating sonde.

- **Width:** 200 mm
- **Depth:** 270 mm
- **Hole centre distance:** 80 x 40 mm
- **Connection:** R 1/2" inner thread from top or bottom
- **Water flow volume:** approx. 16 l/min. at 5 bar
- **Weight:** approx. 3.4 kg



Article	Article no.	Quantities
UT 400 PK (short pressure plate)	01-0097200	per pcs / 1 per carton
UT 400 SDPK (long pressure plate)	01-0097300	per pcs / 1 per carton
UT 400 N (long pressure plate + low pressure valve)	01-0097301	per pcs / 1 per carton
SPARE VALVE	09-0096260	per pcs

## CAST IRON DRINKING BOWLS

### SB 8 / SB 8 PK / SB 8 SD

Cast-iron drinking bowl for cattle and horses, with special powder coating. A stainless steel pressure plate, brass valve and stainless steel valve spring.

- **Width:** 205 mm
- **Depth:** 295 mm
- **Hole centre distance:** 90 mm
- **Connection:** R 1/2" inner thread from top or bottom
- **Water flow volume:** approx. 5.6 l/min. at 5 bar
- **Weight:** approx. 4.5 kg



Article	Article no.	Quantities
SB 8 (brass valve, short pressure plate)	01-0090000	per pcs
SB 8 PK (plastic valve, short pressure plate)	01-0090110	per pcs / 1 per carton
SB 8 SD (brass valve, long pressure plate)	01-0091000	per pcs

### T-PIECE FOR SB 8

With the T-piece the SB 8 can be integrated into a circulation system.



Article	Article no.	Quantities
T-PIECE for SB 8	09-0090027	per pcs

### SPARE PART SET SB 8

Consisting of a pipe elbow, plastic valve, washer, union nut and threaded bushing.



Article	Article no.	Quantities
SPARE PART SET SB 8	09-0090070	per pcs / 10 per carton

### SB 9 PV

Cast drinker for horses and cattle.

With special powder coating and easy going pednular valve with integrated water regulating screw; valve completely amde of brass.

Heating rod can be retrofitted.

- **width:** 205 mm
- **depth:** 295 mm
- **hole centre distance:** 90 mm
- **connection:** R 1/2" inner thread from top or bottom
- **water flow volume:** aprox. 11 l/min. at 5 bar
- **weight:** aprox. 4,8 kg



Article	Article no.	Quantities
SB 9 PV	01-0092000	per pcs / 1 per carton

## TROUGHS AND METAL CAST DRINKING BOWLS

### TW 30 HD

Universal trough drinker for water barrels. Plastic trough drinker with solid galvanized steel frame and sturdy brass floater valve, valve cover made of stainless steel. For transport purposes the valve can be fixed. With two drain holes and screw tops for an easy cleaning. Supplied with flange gasket.

- **Width:** 810 mm
- **Height:** 400 mm
- **Depth:** 365 mm
- **Weight:** approx. 10,6 kg
- **Content:** approx. 32 l



Article	Article no.	Quantities
TW 30 HD	00-0050751	per pcs
SPARE FLOATER VALVE	09-0050754	per pcs

### FLOATER DRINKING BOWL 3 LITER

Metal cast with special powder-coating. If more than 5 drinking bowls are installed parallel to each other then a sufficient diameter of the feed pipe has to be ensured.

- **Width:** 235 mm
- **Depth:** 295 mm
- **Connection:** R 1/2" from bottom
- **Water flow volume:** approx. 7.5 l/min. at 3 bar / approx. 10 l/min. at 5 bar
- **Weight:** approx. 3.5 kg

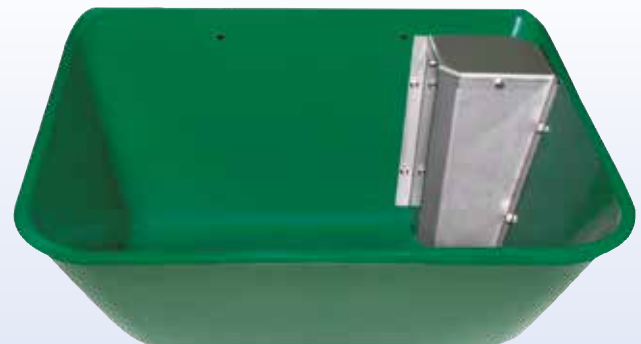


Article	Article no.	Quantities
FLOATER DRINKING BOWL 3 LITER	34-1010000	per pcs
SPARE FLOATER VALVE	39-1010000	per pcs

### FLOATER DRINKING BOWL 15 LITER

Metal cast with special powder-coating. If more than 5 drinking bowls are installed parallel to each other then a sufficient diameter of the feed pipe has to be ensured.

- **Width:** 440 mm
- **Depth:** 340 mm
- **Connection:** R 1/2" from bottom
- **Water flow volume:** approx. 8.5 l/min. at 3 bar / approx. 11 l/min. at 5 bar
- **Weight:** 6.1 kg



Article	Article no.	Quantities
FLOATER DRINKING BOWL 15 LITER	34-1020000	per pcs
SPARE FLOATER VALVE	39-1012000	per pcs

## FLOAT VALVES / CONSTANT WATER LEVEL VALVES

### SV 2

Floater valve to maintain a constant water level in containers. Body and brackets are made of stainless steel.

Regulates a water supply pressure between 0,5 and max. 5 bar.

- **Connection:** 3/4" outer thread
- **Length:** 205 mm
- **Height:** 80 mm
- **Width:** 70 mm
- **Water flow volume:** approx. 12 l/min. at 5 bar



Article	Article no.	Quantities
SV 2	34-0080100	per pcs / 1 per carton

### SV 4

Compact plastic floater valve, fully encapsulated, regulates the water flow. Works between a water pressure of 1 to 5 bar water pressure.

- **Height:** 135 mm
- **Width:** 130 mm
- **Depth:** 80 mm
- **Connection:** R 1/2"
- **Water flow volume:** approx. 20 l/min. at 5 bar



Article	Article no.	Quantities
SV 4	00-0061000	per pcs / 25 per carton



## HEATING CABLES 230 VOLT

### HEATING CABLE 230 VOLT

For frost protection of long water supply pipes which are not in reach of animals we recommend our 230 volts heating cable. A thermostat which is located directly on the water pipe switches on at a temperature below +5° C pipe temperature and switches off at a temperature of more than +15° C. The installation of the 230 volts heating cable can easily be done in a straight line under the pipe.

The cable may not be cut.

No transformer required.



Article	Article no.	Quantities
HK 230 Volt / 2 Meter / 20 Watt	13-0500110	per pcs
HK 230 Volt / 3 Meter / 30 Watt	13-0500120	per pcs
HK 230 Volt / 4 Meter / 40 Watt	13-0500130	per pcs
HK 230 Volt / 8 Meter / 80 Watt	13-0500150	per pcs
HK 230 Volt / 14 Meter / 140 Watt	13-0500160	per pcs
HK 230 Volt / 18 Meter / 180 Watt	13-0500165	per pcs
HK 230 Volt / 22 Meter / 220 Watt	13-0500170	per pcs
HK 230 Volt / 34 Meter / 340 Watt	13-0500180	per pcs
HK 230 Volt / 50 Meter / 500 Watt	13-0500190	per pcs





## HEATING CABLES 24 VOLT, THERMOSTAT, TRANSFORMER

### HEATING CABLE 24 VOLT

The additional heating for water pipes. For a better transfer of the temperature from the heating cable to the water pipe we highly recommend to wrap our aluminium foil to wrap around the pipe / heating cable. All of our heating cables can also be used for plastic pipes; please only use polyethylene pipes which are suitable for warm - and cold water. For an optimal heat distribution, we recommend that you first wrap our aluminium foil around the water pipe. The heating cable is then also wrapped around the pipe following by another wrapping of the aluminium foil on top of the cable. A further insulation of the pipes with foam tubing e.g. armaflex is advisable.



Article	Article no.	Quantities
HK 24 Volt / 1,0 Meter / 11 Watt	13-0500082	per pcs
HK 24 Volt / 1,6 Meter / 18 Watt	13-0500085	per pcs
HK 24 Volt / 2,3 Meter / 26 Watt	13-0500086	per pcs
HK 24 Volt / 3,0 Meter / 33 Watt	13-0500087	per pcs
HK 24 Volt / 4,2 Meter / 47 Watt	13-0500088	per pcs
HK 24 Volt / 6,1 Meter / 67 Watt	13-0500089	per pcs
HK 24 Volt / 8,3 Meter / 91 Watt	13-0500090	per pcs
HK 24 Volt / 11,4 Meter / 126 Watt	13-0500091	per pcs
HK 24 Volt / 16,2 Meter / 178 Watt	13-0500092	per pcs
HK 24 Volt / 23,4 Meter / 258 Watt	13-0500094	per pcs

### THERMOSTAT 230 VOLT

The Lister Heating Element (230V) will automatically switch on under a temperature of 2°C and off at a temperature of above 5°C.  
Resilient up to a maximum of 22 heating elements.



Article	Article no.	Quantities
THERMOSTAT 230 Volt	09-0000904	per pcs

### THERMOSTAT 24 VOLT

For heating sondes 24 volts and separately used heating cables 24 volts.  
maximum workload 384 Watt.



Article	Article no.	Quantities
THERMOSTAT 24 Volt	09-0000909	per pcs

### TRANSFORMER

230 Volt / 24 Volt alternating current

The transformers performance level is dependent upon the quantity of drinking bowls and their respective technical data (e.g. Heating cable or Heating Element).

With thermal switch against overload and overheating and a micro-fuse.



Article	Article no.	Quantities
Transformer 120 (120 Watt)	13-0500010	per pcs
Transformer 200 (200 Watt)	13-0500020	per pcs
Transformer 270 (270 Watt)	13-0500030	per pcs
Transformer 530 (530 Watt)	13-0500040	per pcs

## ACCESSORIES

### ANTI BITE DEVICE

Robust galvanized protection device against bite. For water pipes and heating cables.

- **Length:** 1000 mm
- **Width:** 110 mm
- **Depth:** 80 mm
- **Thickness:** 1,5 mm



Article	Article no.	Quantities
ANTI BITE DEVICE	34-1097100	per pcs

### PROTECTION FRAME

For Lister drinking bowls TW 1, SB 2, SB 21, SB 22, SB 24, SB 104 NT, SB 88 H, SB 8, SB 91, SB 92, SB 800/91 und UT 400.  
Also suitable for bowls up to a depth of 345 mm and a max width of 280 mm.



Article	Article no.	Quantities
PROTECTION FRAME	34-1097000	per pcs

## ACCESSORIES

### ALUMINIUM FOIL

Self adhesive aluminium foil for heat reflection and insulation. Rolls of 50 metres, width 50 mm.



Article	Article no.	Quantities
ALUMINIUM FOIL	13-0500100	per pcs

### RSB 800 FIXING CLAMPS

For mounting drinking bowls of the following types to pipes of 1 1/4" to 2": SB 91, SB 92, SB 800/91, SB 88 H and SB 30.



Article	Article no.	Quantities
RSB 800 FIXING CLAMPS	34-1096000	per pcs

### B 2 FIXING CLAMP

Fixing clamp with securing pin for drinking bowls SB 8, UT 400 and SB 30. With screws M 10 x 80, washers and nuts.



Article	Article no.	Quantities
B 2 FIXING CLAMP	34-0096000	per pcs

### RSB 1 FIXING CLAMPS

Fixing clamps for pipe mounting of drinking bowls SB 1, SB 104 NT, SB 112, AB 113, SB 2, SB 22, SB 23 and SB 24.



Article	Article no.	Quantities
RSB 1 FIXING CLAMPS	34-1091000	per pcs

### A 2 WATERPIPE MOUNTING CLAMP

Waterpipe mounting clamp, for tubes R 3/4" and R 1". Connection: R 1/2" inner thread.



Article	Article no.	Quantities
A 2 Waterpipe mounting clamp	34-0108000	per pcs

### WATER-FLOW REDUCTION PIECE

Made of brass, for all LISTER nipple drinkers and those of other suppliers. Connection: R 1/2" inner and outer thread



Article	Article no.	Quantities
WATER-FLOW REDUCTION PIECE	02-1042000	per pcs

# The complete Lister range



Find latest product releases on our web page:



[www.lister.de](http://www.lister.de)



Presented by:

## LISTER GMBH

Postbox 21 60

58471 Lüdenscheid

Phone. +49 (0) 23 51/10 60 - 0

Fax + 49 (0) 23 51/10 60 - 58

[info@lister.de](mailto:info@lister.de)

[www.lister.de](http://www.lister.de)

Item No. 09935001010  
Technical changes reserved.